

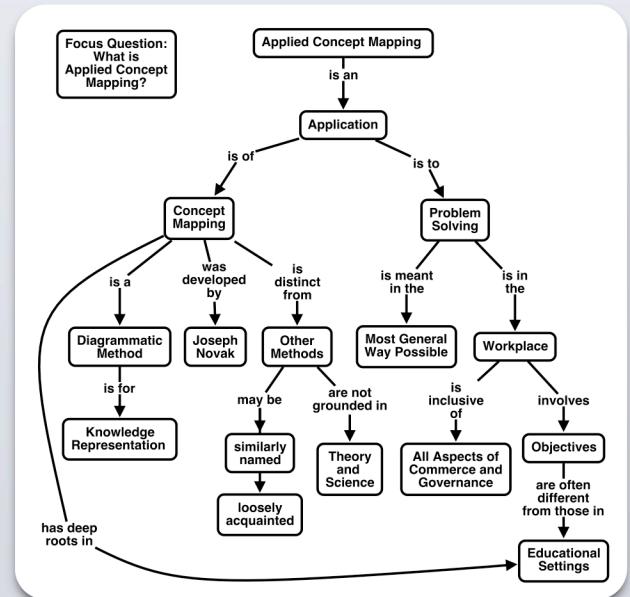
# APPLIED CONCEPT MAPPING

Capturing, Analyzing,  
and Organizing  
Knowledge

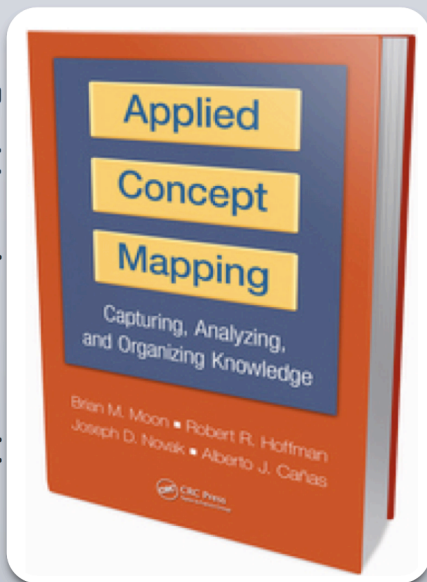
The only *theoretically and scientifically grounded* diagrammatic method of knowledge representation.

## applications

knowledge elicitation, transfer, & management : product, software, cognitive systems, and organizational design & engineering : lexicon & ontology development : training & organizational learning : stakeholder engagement : modeling and analysis : distributed & strategic planning



## publications



## organizations

Procter & Gamble	DoD
Westinghouse	NASA
Constellation Energy	EPA
General Mills	FBI
QinetQ	

www.appliedconceptmapping.info

www.perigeantechnologies.com : 548.414.6718 : improve through \_knowledge.

